

PSYCHO-SOCIAL REHABILITATION CENTER, INC. -DBA

Fellowship House

Annual Report 2014-2015



"Everyone Has Something to Offer"

5711 South Dixie Highway, South Miami, Florida 33143

VISION

Fellowship House's vision is to be the premier provider of comprehensive psycho-social rehabilitation services to individuals with severe and persistent psychiatric disabilities including individuals with co-occurring disorders.



MISSION

It is the mission of Fellowship House to assist adults with severe and persistent psychiatric disabilities and individuals that also have co-occurring substance abuse disorders, achieve the maximum level of community integration and self reliance. This is accomplished by providing a comprehensive continuum of programs and services offering supportive opportunities for vocational and social rehabilitation as well as residential options, psychiatric and case management services. Fellowship House is committed to helping the persons served, who are referred to as "members," to better understand their illness, develop coping strategies, improve their quality of life and experience recovery.

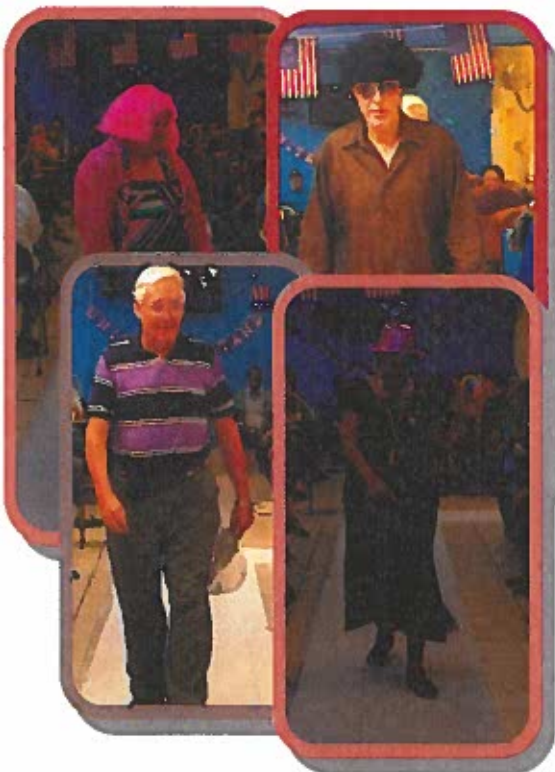
BOARD OF DIRECTORS

- Albert Klomprens, Chairperson
- Publio M. Santana, Secretary
- Nancy Green, Treasurer
- Irving Kreisberg, Member at Large
- Raul Milian
- Rosemary Smith Hoel, MS, LMHC, CAP, President and CEO

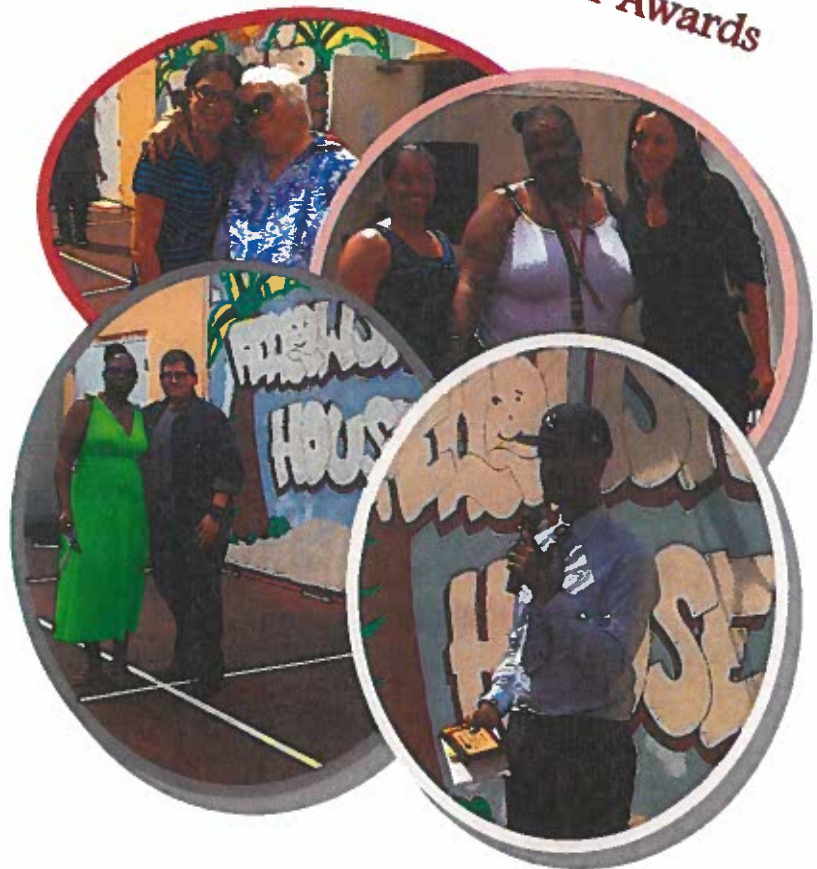
EXECUTIVE STAFF

- Rosemary Smith Hoel, MS, LMHC, CAP, President and CEO
- Cristy Martinez, MPA, Vice President of Administration
- Marta Sanchez, MPA, Vice President of Operations
- Amy Miller, MPA, Vice President of Behavioral Health

Member Awards



**Member
Fashion Show**



A message from:

Rosemary Smith Hoel, President and CEO



Fellowship House continues to be recognized as the premier provider of Psycho-Social Rehabilitation services. The efforts of our staff, board members and supporters continue to keep us on a path of success. Here are some examples of our achievements:

- Publio M. Santana stepped down from his position after an amazing 40 year career at Fellowship House, which has improved the lives of thousands of men and women since its inception. His successor, Rosemary Smith Hoel, will assume the role of President and Chief Executive Officer after dutifully working in the agency for 17 years as a Group Worker, Program Supervisor, Program Manager, Vice President of Clinical Services, and Executive Vice President & Chief Operating Officer.
- Fellowship House celebrated its 40th Anniversary as a leading non-profit organization providing crucial Mental Health and Substance Abuse services to our constituents in the community.
- Fellowship House is happy to announce that in November 2014 Club Fellowship transitioned into their new location in the Hibiscus Plaza building, which is where our Palmetto Bay campus is housed. The new site has a full industrial kitchen which is being used by staff and members to prepare all meals in-house. The size of this location also allows for an increase in membership. Club Fellowship has also reached out to community businesses in order to cultivate relationships for Transitional Employment (TE) opportunities. They have collaborated with Triple O Nursery which allowed for the opening of TE position.
- Fellowship House also completed a CARF Review in 2014 and achieved another 3 year accreditation. Staff worked diligently to ensure that all areas of the review were up to the highest standards.
- Fellowship House transitioned to AWARDS, our Electronic Health Record in early 2015. The process was completed in stages to ensure that all staff was able to adjust to the new procedures. Executive Staff maintained constant communication with the developers of the software as the process unfolded.
- The Florida Department of Transportation awarded Fellowship House two new vans which added to the current fleet of vehicles. These vans and the drivers who manage them provide an important service for members who are unable to utilize public transportation.

I again thank the dedicated Fellowship House staff who constantly work towards providing the highest quality services possible. Fellowship House met and exceeded expectations during several challenges we faced throughout the year. During the implementation of our Electronic Health Record, transitioning our Clubhouse to a new location, and upholding our stringent standards during the CARF survey we showed a commitment to excellence which we've maintained for 40 years. I appreciate everyone's efforts to continue to ensure we remain a premier Psycho-Social rehabilitation agency in our community.



Fellowship House

Is a private, not for profit rehabilitation

agency that provides comprehensive mental health services to individuals that experience psychiatric disabilities as well as those with co-occurring disorders. The overall goal of the agency is to improve the quality of life for these individuals and assist them in achieving the maximum level of community integration and self-reliance. By providing a structured, community based program that concentrates on the development of social, vocational and personal skills, Fellowship House empowers clients to live successfully in the community and avoid reliance on restrictive institutional facilities.



A YEAR IN REVIEW

Throughout 2014-2015, Fellowship House provided high quality services to 1,033 adult men and women diagnosed with mental illness and those with co-occurring disorders. Our comprehensive continuum of programs include:

- ◆ Psycho– Social Rehabilitation (PSR) provides members with supportive opportunities to enhance social, interpersonal, vocational and basic living skills with the goal of achieving maximum community integration.
- ◆ Club Fellowship is based in Clubhouse International’s standards for Clubhouse Programs. The clubhouse model is a well– tested evidence-based recovery model that has been international proven to be highly effective.
- ◆ Case Management provides coordination of necessary services as indicated on the members’ individualized service plan. Linkage is provided to services such as health care, psychiatric services and vocational /educational training.
- ◆ Outpatient services assists om obtaining quality mental health treatment and therapeutic services. Services include consultation and evaluation, assessment, treatment plan review, individual, group and family therapy.
- ◆ Community Housing offers a continuum of residential settings ranging from supervised, transitional residential treatment to permanent supportive housing. Staff caters their support and services delivery to individual member need and assists with skills associated with daily living, such as self-care skills and interpersonal communication.
- ◆ Florida Assertive Community Treatment (FACT) is an evidenced based model designed to assist people to live as independently as possible in the community. The FACT team offers comprehensive services through a multidisciplinary team to individuals with severe and persistent mental illness who do not respond to traditional treatment models.

MEMBER SUCCESS STORY

Margaret A. has been attending Fellowship House since 1994. She is an active member and also works as a Peer Support Specialist. When asked about being a Peer Support Specialist at Fellowship House, Margaret stated, “I knew it would help me achieve the next level of independence and increase my participation in the healing process.” Margaret also works with psychiatrists on site and offers support to members at the agency regularly. Margaret finds helping members at program fulfilling and stated, “I help them increase control of their situation so they can achieve goals they want to meet.”

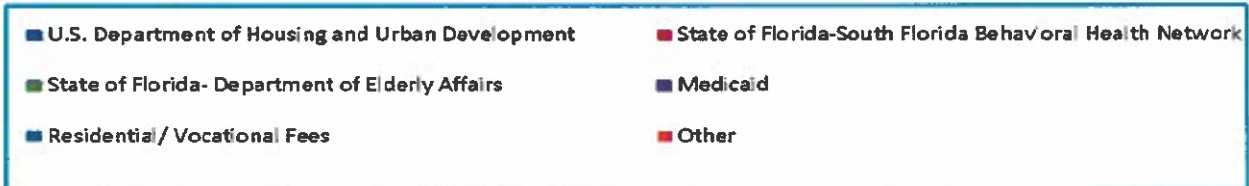
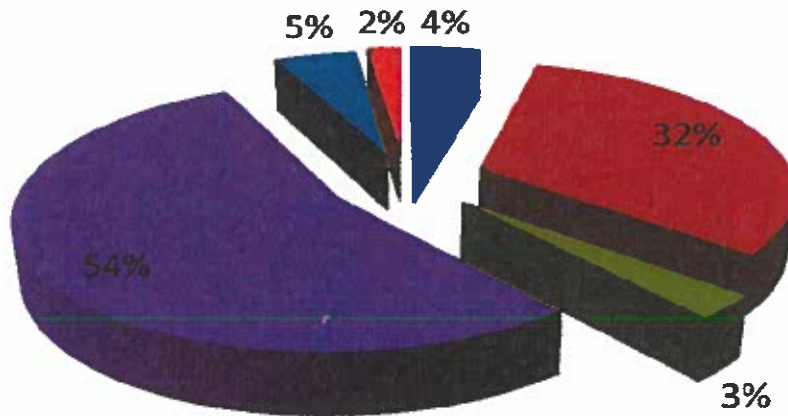




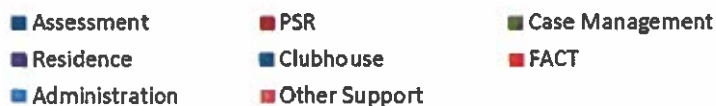
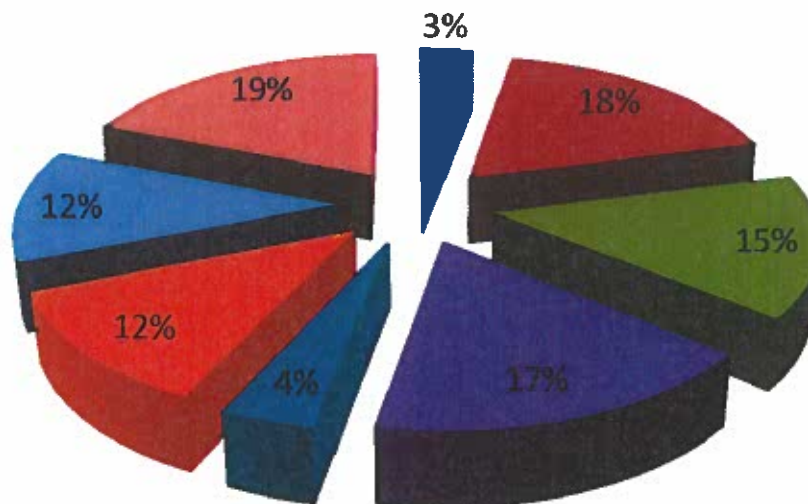
Financial Data 2015

as per Audited Financial Statements

Funding & Revenue by Category



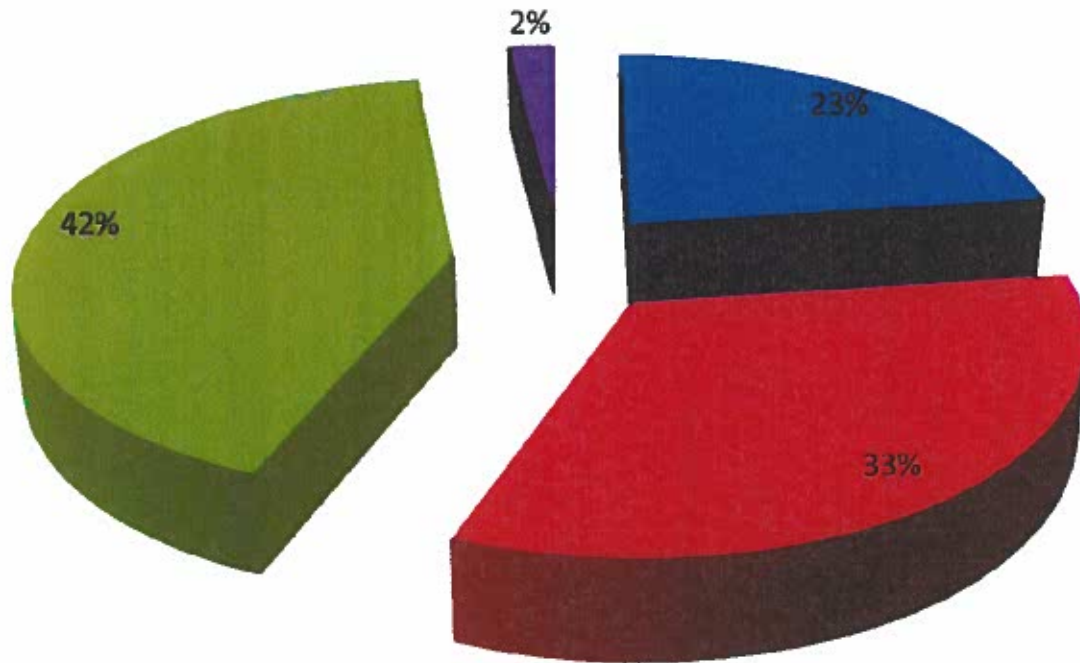
Expenditures by Cost





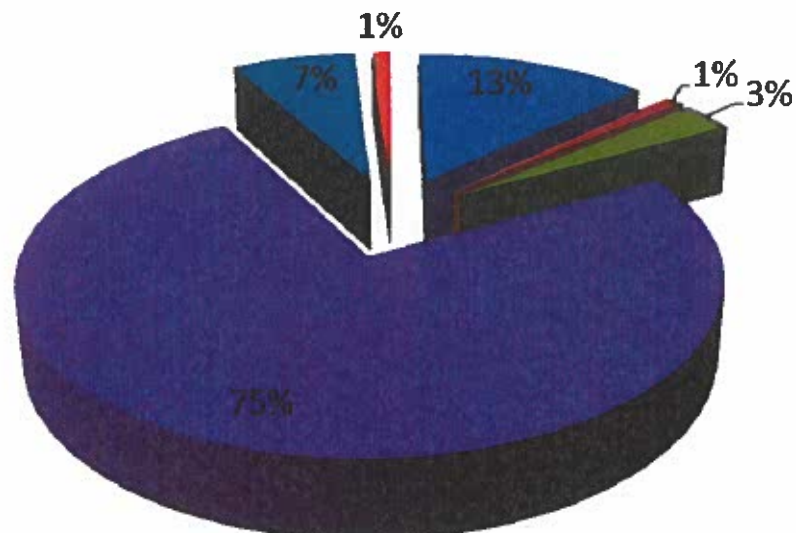
Member Demographics 2014-2015

Ethnicity of Members Served



■ White Non-Hispanic ■ Black ■ Hispanic ■ Other

Income Level of Members Served

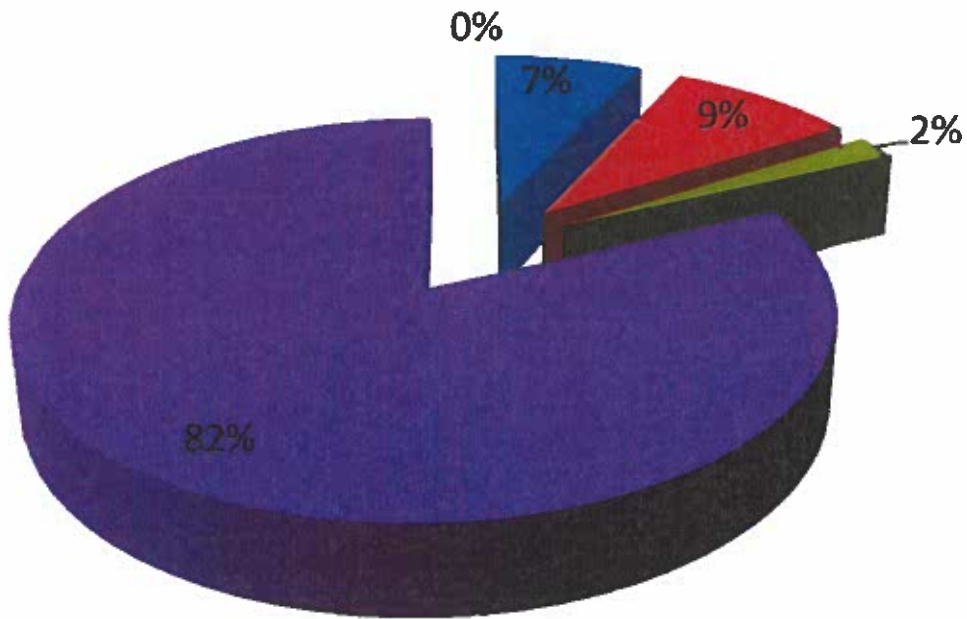


■ None ■ \$1-3000 ■ \$3000-6000 ■ \$6001-12000 ■ \$12001-18000 ■ \$18000-24000



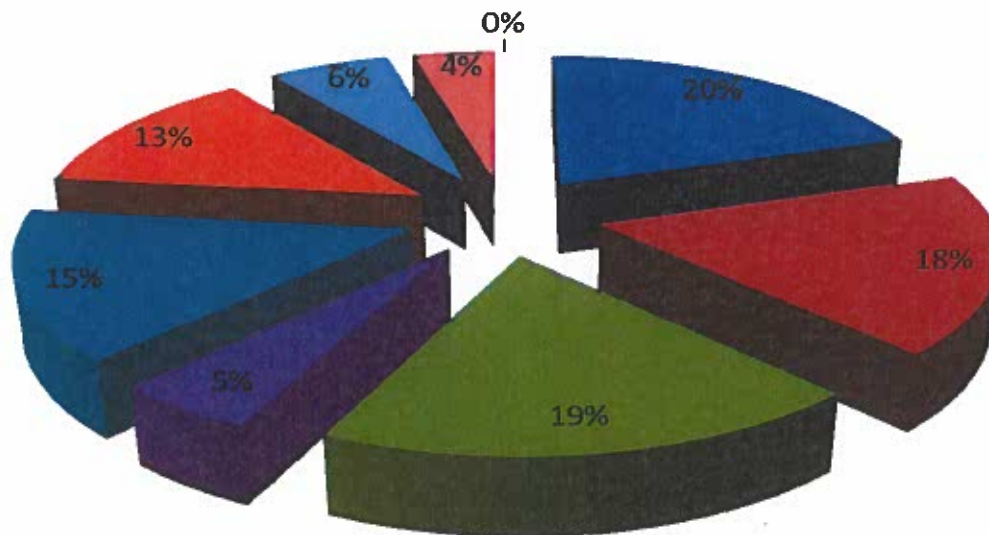
Member Demographics 2014-2015

Members in Miami-Dade



■ Hialeah ■ Homestead ■ Opa Locka ■ Miami ■ Others

Members Funding Sources



■ State Funded ■ Magellan ■ Psychcare
■ Medicaid ■ United ■ Various HMO's
■ Medicare ■ Charity ■ Self Pay



PSYCHO-SOCIAL REHABILITATION CENTER, INC. -DBA

Fellowship House

If you are interested in learning more about Fellowship House, please feel free

to contact the agency via:

Phone (305) 667-1036

Fax (305) 667-4938

or visit us on the World Wide Web at

www.fellowshiphouse.org



South Miami Campus

5711 South Dixie Highway

South Miami, FL 33143

Palmetto Bay Campus

9823 Hibiscus Street

Palmetto Bay, FL 33157



9827 Hibiscus Street
Palmetto Bay, FL 33157
(305) 740-2420

www.clubfellowship.org

Accredited by



Proud Member



Sponsored in part by

